



3rd Annual Rural Health™ CLINICAL CONGRESS



Saturday, November 20, 2021

in conjunction with
National Rural Health Day
Celebrating the Power of Rural!

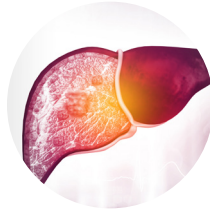
Do you serve patients from **rural or underserved** communities?

Join us **live online Saturday, November 20, 2021** for the **3rd Annual Rural Health Clinical Congress** – an interactive, multi-topic, complimentary CME/CE conference held in conjunction with **National Rural Health Day**. Broadcast starts at 8:00 AM CT!

Sessions



Asthma



Liver Cancer



Hepatitis C



Uterine Fibroids



Hyperkalemia

Register now at ruralhealthcme.com!

Meeting Details

- **Attend virtually** from your desktop, laptop, or mobile device
- **Watch & listen** to updates from experts on primary care topics
- **Participate in live polls** and ask questions to faculty in real time
- Earn up to **6.0 free CME/CE/MOC** credits

2021 Meeting Chair & Moderator



Barbara Yawn, MD
Professor of Family & Community Health
University of Minnesota
Minneapolis, MN

Jointly provided by



Postgraduate Institute for Medicine



RME Collaborative™
RURAL MEDICAL EDUCATION | a division of Talem Health

CME/CE Information

In support of improving patient care, this activity has been planned and implemented by the Postgraduate Institute for Medicine and RME Collaborative. Postgraduate Institute for Medicine is jointly accredited by the Accreditation Council for Continuing Medical Education (ACCME), the Accreditation Council for Pharmacy Education (ACPE), and the American Nurses Credentialing Center (ANCC), to provide continuing education for the healthcare team.

View full accreditation information at ruralhealthcme.com

Physician Continuing Medical Education

This activity has been approved for AMA PRA Category 1 Credit(s)™.

Continuing Nursing Education

This activity is approved for ANCC credit for nurses.

Acknowledgement

This activity is supported by independent medical education grants from AbbVie, Inc.; AstraZeneca Pharmaceuticals; Eisai, Inc.; Genentech, a member of the Roche Group; Merck Sharp & Dohme, Corp., a subsidiary of Merck & Co., Inc.; Novartis Pharmaceutical Corporation; and Regeneron Pharmaceuticals, Inc. and Sanofi Genzyme.